

Snowbee

Since 1978

Snowbee

Snowbee

STRIVE TO BE THE BEST

Company History

SINCE 1978

The **Snowbee** brand name symbolizes quality and originality. It is recognized world-wide by professionals and amateurs. It is challenging continually designing and developing innovative products, but it is a challenge we have undertaken since 1978. It is our mission to provide you, the rider, with products designed to enhance your riding pleasure.

We are proud to present the latest edition of the **Snowbee** equestrian catalogue, showcasing our new creative design and innovation. We believe that in addition to considering the comfort and welfare of our horses, it is essential that we also consider the same for our riders. For the past decade, we have been working on developing riding equipment that suit both purposes. Therefore, we hope that you'll find **Snowbee** original products of interest to you.

We sincerely invite you to take some time to browse through our new product catalogue, and please do not hesitate to contact us for any questions. The continuous feedback and ideas we receive from our valued customers has become a huge part of our success. It motivates us to continue developing innovative products and offering the best quality and value possible.

Thank you for your trust and support for **Snowbee**. We look forward to being at your service.

Snowbee®




CONTENTS

RIDER

- 04 RIDING HELMET
- 05 WHIPS
- 18 GLOVES
- 20 GOGGLES

HORSE

- 21 GIRTHS
 - 27 HALTERS & LEADS
 - 30 HORSE BOOTS
- 



HB038199093

- Snowbee riding helmet
- ABS shell with rubberized painting
- High shock absorbing EPS foam
- Multiple air flow vents with electroplated mesh
- Coolmax removable and washable liner
- Fixed P.P. visor
- Rotary adjust system with neck protection
- Synthetic leather straps & YKK buckle
- Carbon fiber decoration on top
- Size: S (51 ~ 54cm) , M (55 ~ 58cm), L (59 ~ 63cm)
- Certification: CE EN1384:2012-02 + VG1 01.040 2014-12



NEW

HB054141200

- Leather handle sewing red/white/blue ribbon, shiny silver caps
- Nylon thread shaft, #K Litchi leather keeper with red/blue sewing line
- Overall length: 65cm



NEW

HB054141201

- Leather handle sewing red/white/blue ribbon, shiny silver caps
- Nylon thread shaft, #K leather keeper with silver Snowbee print
- Overall length: 65cm



NEW

HB054141202

- Leather handle sewing red/blue line, shiny silver caps with Snowbee print on the end
- Nylon thread shaft, #K Litchi leather keeper with red/blue sewing line
- Overall length: 65cm



NEW

HB054141203

- Leather handle sewing red/blue line, shiny silver caps with Snowbee print on the end
- Nylon thread shaft, #K leather keeper with silver Snowbee print
- Overall length: 65cm



Non-slip & Eco-friendly high Tenacity & comfortable grip

- 3D visual effects
- Non-slip, Eco-friendly, High Tenacity quality
- Soft & comfortable grip



- Eco-synthetic leather handle – pearled leaf style, black caps with Snowbee print on the end
- Nylon thread shaft, #K Eco-synthetic leather keeper
- Overall length: 65cm



- Eco-synthetic leather handle – pearled leaf style, black caps with Snowbee print on the end
- Nylon thread shaft, #K leather keeper with gold Snowbee print
- Overall length: 65cm



- Eco-synthetic leather handle – earth style, rose gold caps
- Nylon thread shaft, #K Eco-synthetic leather keeper
- Overall length: 65cm



Non-slip & Eco-friendly high Tenacity & comfortable grip

NEW

HB054141207

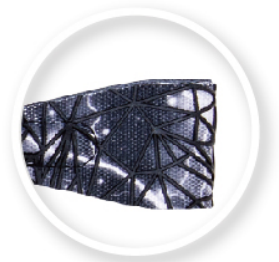
- Eco-synthetic leather handle – earth style, rose gold caps
- Nylon thread shaft, #K leather keeper with gold Snowbee print
- Overall length: 65cm



NEW

HB054141208

- Eco-synthetic leather handle – thick stripes style, dull silver caps with Snowbee print on the end
- Nylon thread shaft, #K Eco-synthetic leather keeper
- Overall length: 65cm



NEW

HB054141209

- Eco-synthetic leather handle – thick stripes style, dull silver caps with Snowbee print on the end
- Nylon thread shaft, #K leather keeper with silver Snowbee print
- Overall length: 65cm



NEW

HB054141210

- Leather handle, shiny brown caps
- Nylon thread shaft, #K leather craft keeper with embossed Snowbee
- Overall length: 65cm



NEW HB054141211

- Leather handle, brown metal caps
- Nylon thread shaft, #K leather craft keeper with embossed Snowbee
- Overall length: 65cm



NEW HB054141212-BR

- Weaved carbon-fiber synthetic leather handle, rose gold caps
- Nylon thread shaft, #K leather keeper with gold Snowbee print
- Color: Brown
- Overall length: 65cm



NEW HB054141212-BK

- Weaved carbon-fiber synthetic leather handle, rose gold caps
- Nylon thread shaft, #K leather keeper with gold Snowbee print
- Color: Black
- Overall length: 65cm



NEW HB054141213

- Camouflage webbing handle, black caps with Snowbee print on the end
- Nylon thread shaft, #K leather keeper with gold Snowbee print
- Overall length: 65cm



HB054141010

- Snowbee handle, nylon thread shaft
- “Y” leather keeper
- Length: 50cm



HB054141053

- Golf handle w/Snowbee Pin, reflectivestrap shaft, “Fish” leather keeper
- Length: 50cm



HB054141131Y

- Microfiber with anti-slip silicone print handle, shiny black metal cap
- 4 rows matching colorful crystal decoration nylon thread shaft
- #37 style leather keeper
- Length: 65cm
- Handle color: Black/black , Black/purple



HB054141132Y

- Snowbee new diamond type handle with bright flower pearl decoration at the end
- H style leather keeper
- Length: 65cm
- Color:
- Red handle + black/red shaft
- Blue handle + black/blue shaft
- Black handle + black/purple shaft



HB054141134

- Double color leather wrapping handle
- Snowbee laser logo on silver Alum. cap
- Leather hand loop, With colorful crystal
- Nylon thread shaft, #H style leather keeper
- Handle color: Black/Silver, Black/Gold
- Length: 65cm



HB054141136Y

- Sewing line leather handle
- Shiny black metal cap
- Leather wrapping shaft
- #K style thicker leather keeper
- Leather color: Black, Brown
- Length: 65cm



HB054141144

- Quality sewing leather handle
- Big Alum. cap with Snowbee laser logo
- Nylon thread shaft
- #K style quality and thicker leather keeper with Snowbee silver logo
- Crocodile embossed leather
- Leather color: Black, Brown
- Length: 65cm



HB054145033

- Rubber handle w/Snowbee pin
- Transparent outer cover nylon thread shaft
- "U" leather keeper
- Length: 65cm



NEW HB054242100

- Leather handle sewing red/white/blue ribbon, shiny silver caps
- Nylon thread shaft & lash
- Overall length: 110cm



NEW HB054242101

- Leather handle sewing red/blue line, shiny silver caps with Snowbee print on the end
- Nylon thread shaft & lash
- Overall length: 110cm



NEW HB054242102

Non-slip & Eco-friendly high Tenacity & comfortable grip

- Eco-synthetic leather handle – pearled leaf style, black caps with Snowbee print on the end
- Nylon thread shaft & lash
- Overall length: 110cm



NEW HB054242103

Non-slip & Eco-friendly high Tenacity & comfortable grip

- Eco-synthetic leather handle – earth style, rose gold caps
- Nylon thread shaft & lash
- Overall length: 110cm



NEW

HB054242104

Non-slip & Eco-friendly high Tenacity & comfortable grip

- Eco-synthetic leather handle – thick stripes style, dull silver caps with Snowbee print on the end
- Nylon thread shaft & lash
- Overall length: 110cm



NEW

HB054242105

- Camouflage webbing handle, black caps with Snowbee print on the end
- Nylon thread shaft & lash
- Overall length: 110cm



NEW

HB054242106-BR

- Weaved carbon-fiber synthetic leather handle, rose gold caps
- Nylon thread shaft & lash
- Color: Brown
- Overall length: 110cm



NEW

HB054242106-BK

- Weaved carbon-fiber synthetic leather handle, rose gold caps
- Nylon thread shaft & lash
- Color: Black
- Overall length: 110cm



HB054242010

- Leather handle, w/black mushroom cap w/nylon thread covered shaft & lash
- Length: 100cm ~ 120cm



HB054242050

- Non-slip handle, snowbee logo on black mushroom cap, nylon thread covered shaft & lash
- Length: 100cm ~ 120cm



HB054242060RR

- Leather handle w/stamped Snowbee logo, black mushroom cap w/Snowbee logo, matching colorful crystal on the shaft, nylon thread covered shaft & lash
- Crystal color: ruby green, ruby gold, ruby blue, ruby pink, ruby purple and white.
- Length: 100cm ~ 120cm



HB054242072

- Leather grided handle, brown caps
brown nylon thread covered shaft & lash
- Handle: Brown
- Length: 100cm ~ 120cm



HB054242077

- Anti-slip Microfiber cover silicone
handle, with big black cap, with nylon
thread covered shaft & lash.
Handle: black/pink, black/purple,
black/turquoise, black/orange,
black/black
- Length: 100cm ~ 120cm



HB054242081Y

- Microfiber with anti-slip silicone print handle, shiny black metal cap
4 rows matching colorful crystal
decoration nylon thread shaft & lash
- Length: 100 ~ 120cm



HB054242082

- Double color leather wrapping handle 4 rows matching colorful crystal decoration
- Nylon thread shaft & lash
- Handle Color: black/silver, black/gold
- Length: 100 ~ 120cm



HB0542599Y

- Snowbee new diamond type handle with bright flower pearl decoration at the end
- Black nylon with #10 thicker blue, pink, purple colorful braided thread shaft
- Length: 100 ~ 120cm
- Handle Color:
 - Blue handle + black/blue shaft
 - Red handle + black/red shaft
 - Black handle + black/purple shaft



HB054541059

- Racing bat Non-slip golf grip handle, with fiberglass shaft wrapped with plastic outer, with leather flapper.
- Length: 69cm



HB054541064-62-BK

- Racing bat Non-slip golf grip handle, with fiberglass shaft wrapped with plastic outer, with leather flapper.
- Length: 62cm



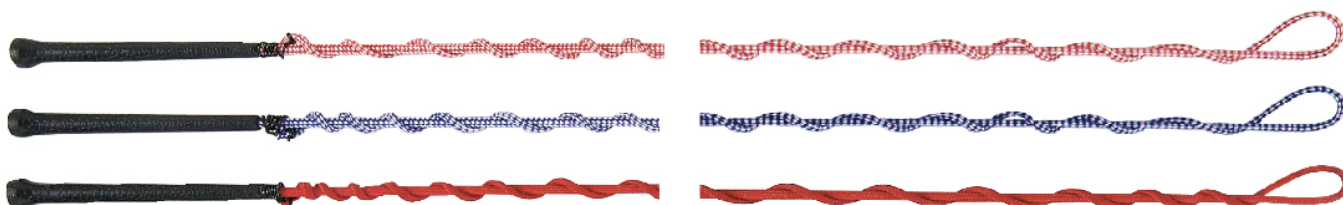
HB07410001SB-68

- Padded jockey exercise whip, with non-slip golf grip handle, with fiberglass shaft wrapped plastic outer, with PU padded on the end
- Length: 68cm



HB054343013

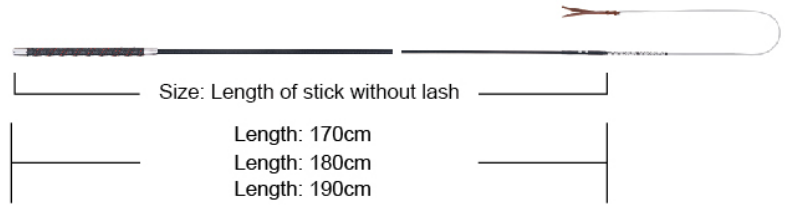
- PVC handle, PE shaft & long lash
- Length: 160cm, 180cm, 200cm
- Color: black, navy, purple, red, hunter green, kelly green, white/red, white/blue



HB054655095R

- Snowbee driving whip
- Leather with red sewing line handle,
- Nylon thread shaft, shaft diameter 9mm, lash length: 50cm, leather lash 13cm.
- With curved line lash.
- Handle: black leather with red sewing line
- Shaft : Black
- Length: 170 ~ 190cm

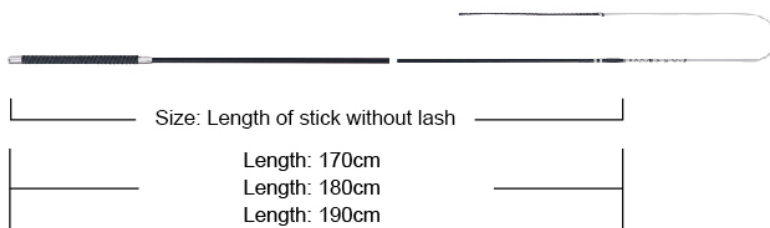
Length chart



HB054655096R

- Snowbee driving whip
- Non-Slip rubber handle,
- Nylon thread shaft, shaft diameter 9mm, lash length: 50cm
- With curved line lash.
- Handle : Black
- Shaft : Black
- Length : 170cm ~ 190cm

Length chart



HB030931988

Frankfurt Leather Gloves

- Sheep skin leather on the back + special “wave” lycra design allowing the joints moving & bendy freely
- PU leather on the palm w/super-grip reinforcement on forefinger, with Special “db” design super grip reinforcement on ring finger/little finger
- Size: 6, 6.5, 7, 7.5, 8, 8.5, 9, 10
- Color: black, brown
- Closure tab with Snowbee embroidery



HB031031942

Mannheim Synthetic Leather

- Digital PU leather on the back with lycra design allowing the joints bendy freely
- PU leather on the palm
- Colorful lycra panels for better fits
- With Snowbee embroidery on the closure tab
- With reinforcement on forefinger
- Size: 6, 6.5, 7, 7.5, 8, 8.5, 9, 10
- Leather Color: Black



HB031431000

Koblenz Mesh Gloves

- Anti-UV mesh fabric w/soft PU suede leather on the back
- PU leather on the palm
- With crystal patterns decoration on patch
- With reinforcement on forefinger & ring & little fingers
- Crystal decoration design: flower, bow, hill, strip
- Size: 6, 6.5, 7, 7.5, 8, 8.5, 9, 10
- Color: Black, brown



#15

HB031231929

BREDA Synthetic Leather Gloves

- PU leather on the back
- PU leather on the palm
- With SNOWBEE embroidery on the closure tab
- With reinforcement on forefinger
- Size: 6, 6.5, 7, 7.5, 8, 8.5, 9, 10
- Color: black



HB031231938

Synthetic Leather Gloves

- Synthetic PU leather on the back with transfer logo printing
- With PU suede leather on the palm
- With Neoprene cuff
- With TPR logo on the closure tab
- With reinforcement on forefinger and ring & little finger
- Size: 6, 6.5, 7, 7.5, 8, 8.5, 9, 10
- PU leather color: black

HD031031993

Polo Gloves

- Spandex back and upper thumb
- Microsuede with foam padded palm
- Elasticated wrist band
- Color: black/black palm, blue/black palm, red/black palm
- Size: XXS, XS, S, M, L



HB038195034

- Lenses with UV400 treatment
- CE EN1836.2005 standard
- Anti-Fog & fresh mirror treatment on the lenses
- 20mm width of high quality elastic Snowbee logo band
- With micro fiber textile bag
- Lenses colors: Clear, Dark Grey, Yellow, Blue Revo



Clear



Grey



Blue Revo

HB1600107



- Contoured Cool Plus Fiber long girth
- With Taiwan made elastic at both sides
- With SS roller buckles & D ring
- Size: 90~150cm
- Color: Black



HB1600108



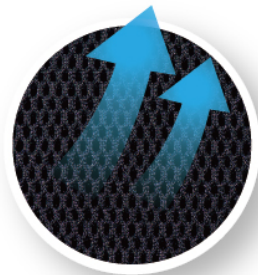
- Contoured Cool Plus Fiber short girth
- With SS roller buckles
- Size: 45~85cm
- Color: Black



HB1600109



- Contoured Cool Plus Fiber short girth
- With Taiwan made elastic at both sides
- With SS roller buckles
- Size: 45~85cm
- Color: Black



COOLMAX – TPU TOP GIRTH WITH COOLMAX LINING

HB1600098

- TPU shell girth, TPU shell on the top, with 7mm Neoprene & **Cool Max** lining at the bottom, with SS buckles, with double D rings at the middle
- Size: 50~80cm



HB1600101

- TPU shell girth, TPU shell on the top, with 8.0mm memory foam & **Cool Max** lining at the bottom, with SS buckles, with double D rings at the middle
- Size: 95~115cm
120~140cm



HB1600080

“Coolmax” – Gel Foam Girth

- Western gel foam girth with “COOL MAX” fabric at the bottom
- with D ring and SS buckles
- Size: 26”~36”
- Color: Black



HB1600087

“Coolmax” – Memory Foam Girth

- Contoured memory foam long girth, with Neoprene on the top side with memory foam + COOL MAX fabric at the bottom with Taiwan made elastic at two sides, with D ring at the middle with SS roller buckles
- Size: 100~140cm
- Color: Black



HB1600088

“Coolmax” – Memory Foam Girth

- Contoured memory foam short girth, with Neoprene on the top side, with memory foam + COOL MAX fabric at the bottom, with Taiwan made elastic at two sides, with SS roller buckles
- Size: 50~90cm
- Color: Black



HB1600059

- Memory foam girth with equalizer buckle system, with D ring and SS roller buckles
- Size: 50~90cm
- Color: Black



HB1600063

- Straight memory foam short girth, with D ring and SS roller buckles
- Size: 50~90cm
- Color: Black



HB141102842

- Straight memory foam short girth, with SS roller buckles
- Size: 50~90cm
- Color: Black



HB141102828

- Dressage foamed girth
- With English elastic on two ends, with
- SS roller buckles
- Size: 50~90cm
- Color: Black



HB141102811

- Standard straight foam padded girth
- With English elastic on one end, with
- S.S. roller buckles
- Size: 90~150cm
- Color: Black



HB141102813

- Contoured foam padded girth
- With English elastic on one end, with
- S.S. roller buckles
- Size: 90~150cm
- Color: Black



HB2300049RPU

OCEAN TONED HALTER

- 1" Nylon webbing with adjustments on poll strap and head strap
- With reinforced eyelet holes
- With foam pad on the crown and nose parts
- With N.P. hardware
- Size: Pony, Cob, Full



HB2400043

OCEAN TONED LEAD ROPE

- 5/8" P.P. lead rope
- With N.P. hardware
- With black end cap
- 2.4M long



HB2400047

OCEAN TONED TIE LEAD

- 1" Nylon webbing
- With N.P. hardware
- With padded hand loop
- 2.0M long



HB210102154W

AUTUMN TONED HALTER

- 1" Nylon webbing with adjustments on poll strap, head strap and curb strap
- With reinforced eyelet holes
- With B.P. hardware
- Size: Pony, Cob, Full



HB240302154W-LEAD

AUTUMN TONED LEAD ROPE

- 5/8" P.P. lead rope
- With B.P. hardware
- With black end cap
- 2.4M long



HB2300058

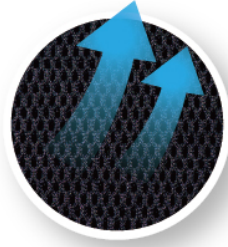
TWO-TONES HALTER

- 1" Nylon webbing in 2 colors combination with adjustments on poll strap, head strap and curb strap
- With reinforced eyelet holes
- With B.P. hardware
- Size: Pony, Cob, Full
- Color: any color combination



HB2500067-Front

- Cool Plus Fiber with sandwich mesh & 4mm foam
- With TPR shell
- Double elastic Velcro fasteners ensure a perfect fit
- Size: S, M, L
- Color: black



HB2500068-Hind

- Cool Plus Fiber with sandwich mesh & 4mm foam
- With TPR shell
- Double elastic Velcro fasteners ensure a perfect fit
- Size: S, M, L
- Color: black



HB2500058

Snowbee Open Front Tendon Boots

- Durable tendon boots, TPU shell with 5.5mm Neoprene, with Cool Max lining, with Velcro closure
- Size: S, M, L
- Shell color: Black



HB2500055

Snowbee Fetlock Boots

- Durable fetlock boots, TPU shell with 5.5mm Neoprene, with Cool Max lining, with Velcro closure
- Size: S, M, L
- Shell color: Black



HB2500021

SNOWBEE DRESSAGE TENDON BOOTS (FRONT)

- Shell made from PU with Brass buckles
- A comfortable 5.5mm Neoprene to ensuring protection of the fetlock
- Breathable and shock absorbing Neoprene lining
- Size: M, L
- Color: Black/Black, White/White, Brown/Black, Navy/Black



HB2500029

SNOWBEE DRESSAGE TENDON BOOTS (HIND)

- Shell made from PU with Brass buckles
- A comfortable 5.5mm Neoprene to ensuring protection of the fetlock
- Breathable and shock absorbing Neoprene lining
- Size: M, L
- Color: Black/Black, White/White, Brown/Black, Navy/Black



HB2500011

SNOWBEE TENDON BOOTS

- Molded shell with ventilation holes
- Breathable and shock absorbing Neoprene lining
- TPU cover protection
- Adjustable Brass buckle strap
- Size: M, L
- Color: Black/Black, Brown/Black



HB2500012

SNOWBEE FETLOCK BOOTS

- Molded shell with ventilation holes
- Breathable and shock absorbing Neoprene lining
- TPU cover protection
- Adjustable Brass buckle strap
- Size: M, L
- Color: Black/Black, Brown/Black



HB251211101B

SNOWBEE OPEN FRONT TENDON BOOTS

HB251211102B

SNOWBEE FETLOCK BOOTS

- Well designed, precision molded shell boots in both Black color
- 6mm ultra-soft neoprene lining with matching elastic & Velcro color
- Strong stretch elastic with practical double Velcro fastening
- Modern color collection with trendy binding
- Easy to clean
- Superior fit & comfortable for leg protection
- Size: S, M, L, XL
- Color: Black



HB251211102B



HB251211101B

Snowbee

STRIVE TO BE THE BEST





Head Office :
Snowbee International Corp.
6F., No. 176, Sec. 3, Jinhua Rd., West Central Dist., Tainan City 70055, Taiwan
E-mail : horse@snowbee.com
Web : www.snowbee.com